

How to Install Whisper® Using Double Sided Whisper Tape

Sealed Air®

Whisper® with Whisper Tape can be adhered to many clean, dry, non-porous surfaces such as painted plasterboard, painted concrete, painted block, tile, stainless, aluminium, sheetmetals, and even glass.

Storage Instructions:

DO NOT STORE WHISPER SHEETS IN DIRECT SUNLIGHT It is best practice to allow sheets to condition indoors, flat on the floor, free of packaging, at 17-28°C for 2 hours prior to installation. This conditioning will ensure any dimensional change from thermal expansion is minimized.

Installation Checklist

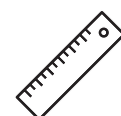
- I have read and understood:
 - The Whisper Brochure
 - The Whisper Tolerance Sheet
 - The Whisper Material Safety Data Sheet
- Recorded batch codes from packaging
- Ensured the WhisperTape matches the colour of the Whisper sheet - white tape for white sheets, black tape for black sheets.
- Made sure your surfaces are accessible, flat, and parallel, if in doubt put a ruler across the surface. If it's not sitting flat, do not use Whisper Tape*. Flaking, crumbly or porous surfaces may be prepared with an acrylic primer paint.
- Applied a sample of the tape to a discreet area first to see if it sticks.
- Cleaned the surface area. Surfaces may be cleaned with a fresh microfibre cloth & 50% isopropyl alcohol (IPA) spray. Never use meths or oil-based products like degreaser to clean surfaces for use with tapes.
- You have all the tools and PPE required:
You will Need:



Safety glasses



Cut resistant gloves



Straight edge or ruler

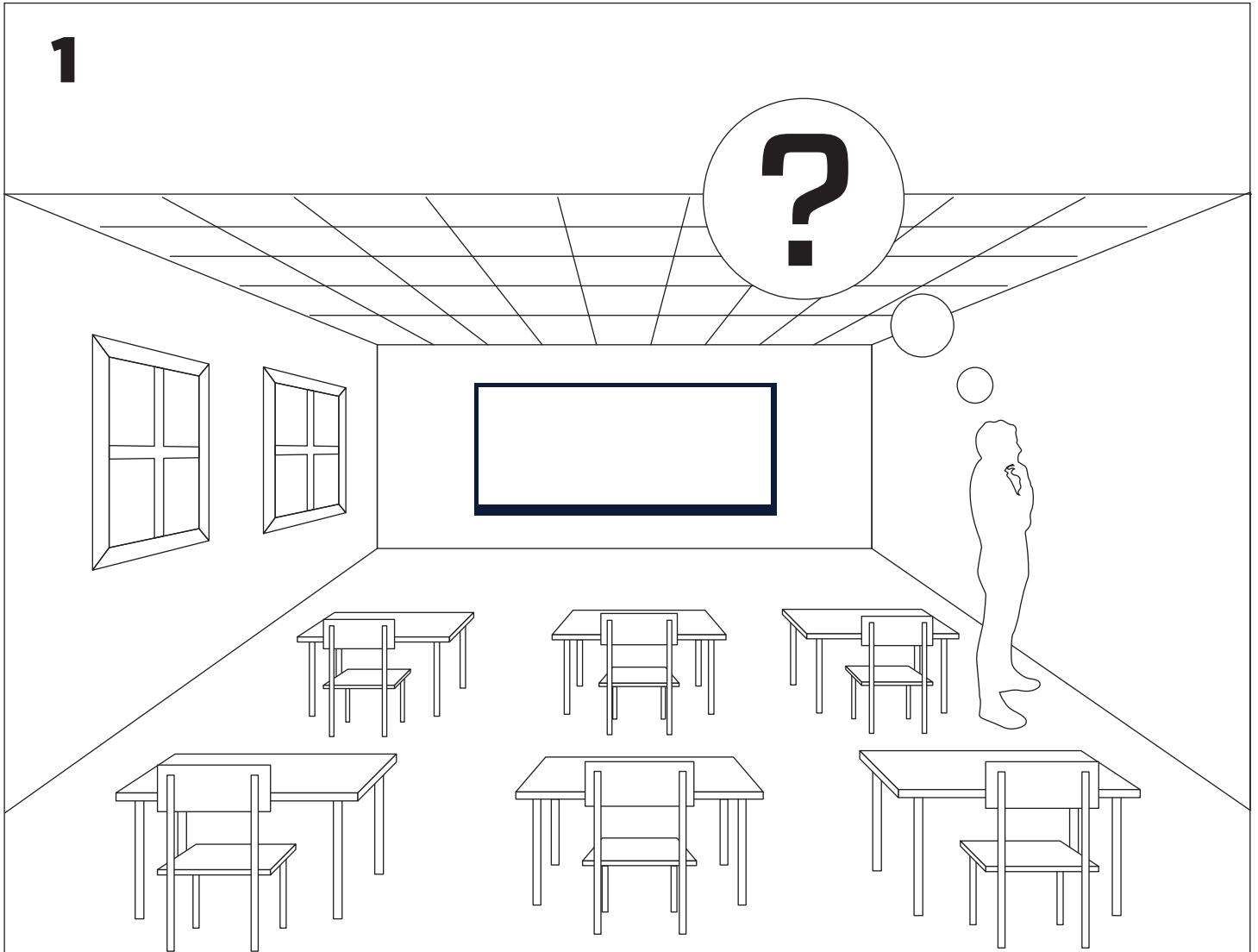


Sharp blade

*Do not use Whisper Tape under extreme temperature variation, where there will be appreciable joint movement or where the surface is dirty, porous or crumbles easily. In these cases, mechanical fastenings should be applied to supplement tape installation.

There are many mechanical fasteners available, screws and washers are most common.

1



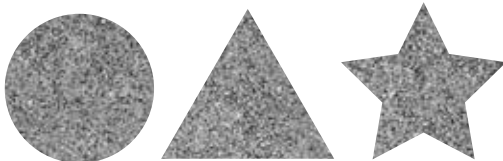
Step 1:

Decide where to install the Whisper® Sheets:



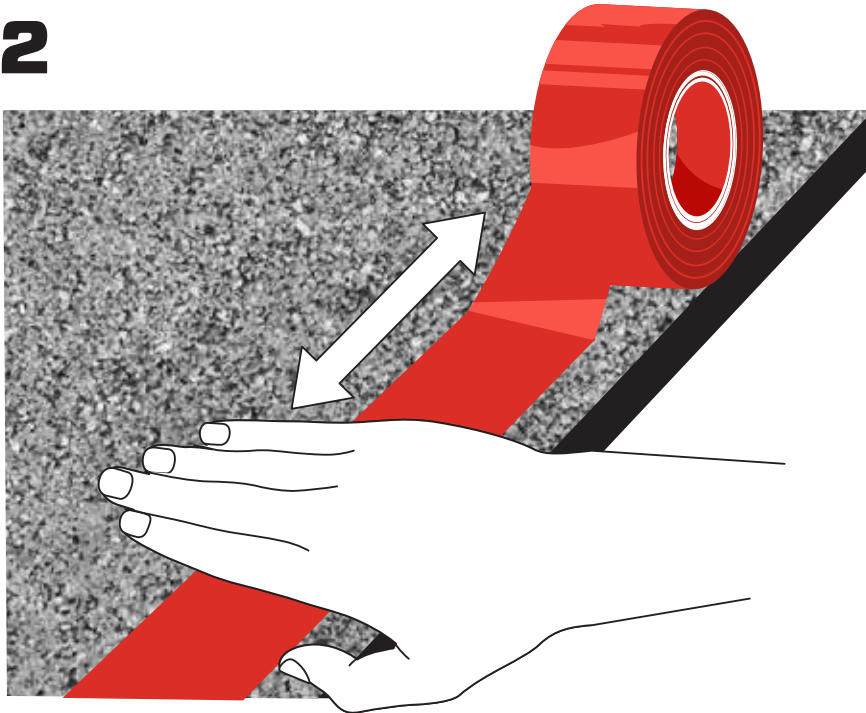
Tip: Sound will bounce off hard, flat surfaces, causing increased reverberation. As a result of this, it's most practical to apply Whisper to ceilings and walls above table height in the room. Care should be taken to place Whisper on parallel walls and into corners.

If the room has parallel walls then you could experience flutter echo. To mitigate this, install Whisper, where practical, on either one or both of the parallel walls. The lightweight Whisper panels can be easily moved around the room to approximate best possible positioning for acoustic comfort. If in doubt seek the advice of a professional acoustic consultant.



Whisper can easily be cut into a wide range of fun and interesting shapes. Distribute shapes evenly around the room and set your creativity free.

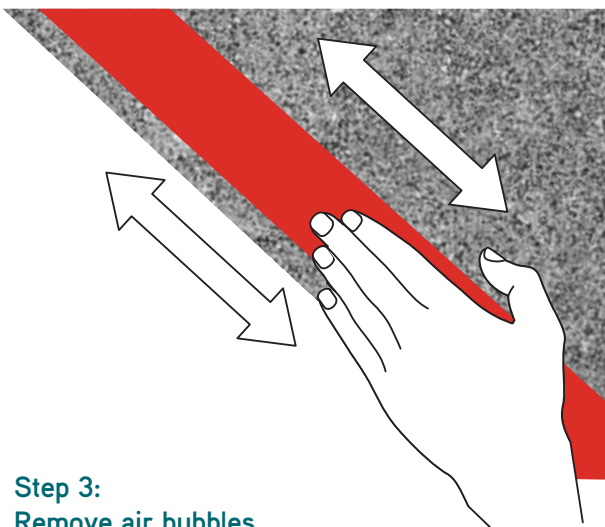
2



Step 2: Apply Whisper Tape on Whisper® Sheets:

- There are 2 sides to Whisper FR 25mm, smooth and rough. Whisper-Tape needs to be applied on to the smooth side, with the rough side facing the noise.
- When unrolling WhisperTape, gently unroll, allowing the tape to “fall” off the roll – do not stretch or pull the tape while unrolling.
- Unroll in small sections at a time – eg 300 – 400mm at a time. As you unroll, gently sweep your hand towards the roll applying pressure on the tape. This will remove any slack from the tape and allow for adequate adhesion.

3



Step 3: Remove air bubbles


- Remove air bubbles by applying ample pressure in a back and forth, sweeping motion over the tape.
- Try to force any air bubbles out from under the tape by applying additional pressure side to side.
- Remove as many air bubbles as possible. A hard roller, or wedge shaped squeegee may help.

4



Step 4: Complete WhisperTape application

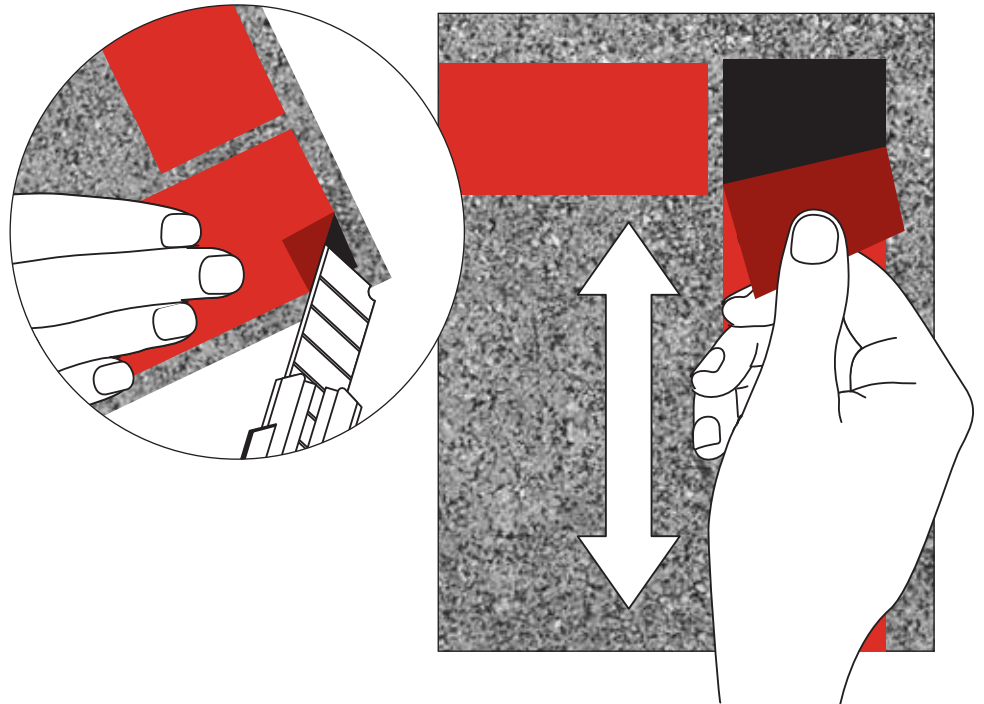
- Apply WhisperTape to the entire perimeter of Whisper sheet with a gap of approx. 20mm from the edge.
- Apply another length of WhisperTape in the middle of long run of the sheet.
- You have applied sufficient pressure when the foam texture is visible through the tape.

 Tip: If you have cut the sheet, follow a similar even distribution of tape to the surface.

5

Step 5: Remove Release Liner

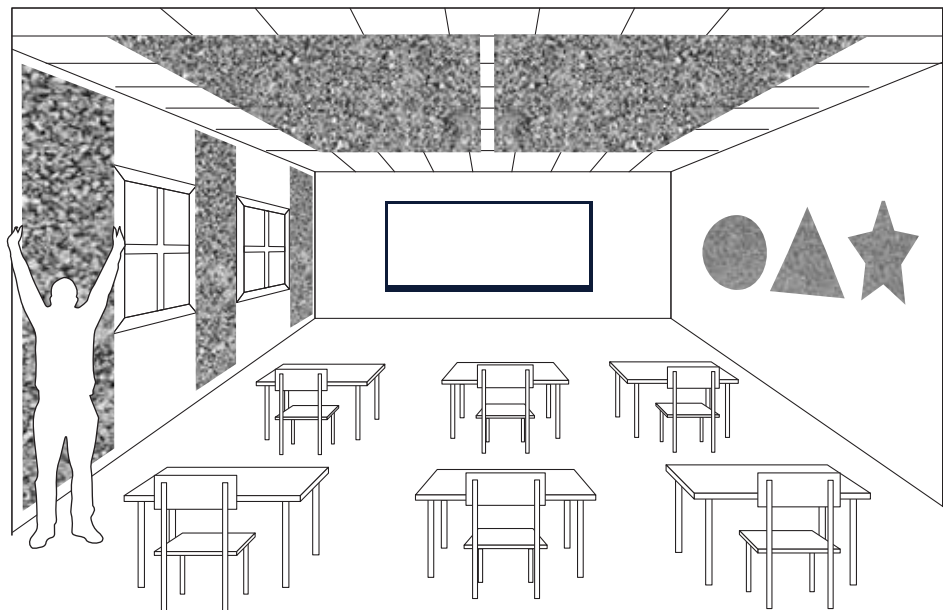
- Use a sharp blade or fingernail to lift the edge of the red release liner.
- **SLOWLY** remove red release liner from the WhisperTape at 180 degrees to the direction of Whisper Tape application. Make sure that the Whisper-Tape does not lift from the Whisper sheet.
- **DO NOT TOUCH EXPOSED ADHESIVE** with your fingers. If you do, replace with new tape.



6

Step 6: Apply Whisper® Sheet on wall/ceiling

- Position the Whisper sheet on the wall / ceiling.
- Apply ample pressure to the sheet in a firm sweeping motion from one end of the sheet to the other, directly over the WhisperTape. The objective is to remove air bubbles between the tape and the surfaces.



Post Installation:

Adhesion Check: Adhesion will grow significantly over time. A discreet mechanical fastening is recommended in addition to tape on ceiling installations along with an annual inspection program. This aggressive adhesive is not designed to clean remove or to be able to be re-used. Tape may be replaced if lifting is observed.

Disclaimer: It is the customer's responsibility to ensure that a particular product with the properties described in this product specification is suitable for use in a specific situation. No warranty, representation or guarantee is given by us regarding the suitability of this product for any particular use. The physical and performance characteristics shown are averages obtained from tests recommended by PSTC, ASTM and our own internal procedures. A particular roll may vary from these averages. It is recommended that the customer determine the suitability for their own purpose by conducting a rigorous trial process.

Do you have additional spaces that need acoustic treatment? Other versions and fixings of Stratocell Whisper are available for fencing, gymnasiums, halls, pools and even outdoors. Contact us to discuss.